

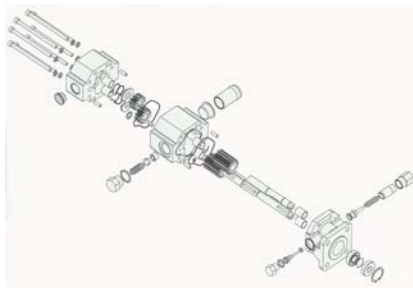
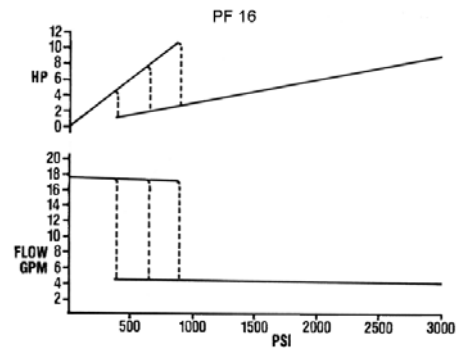
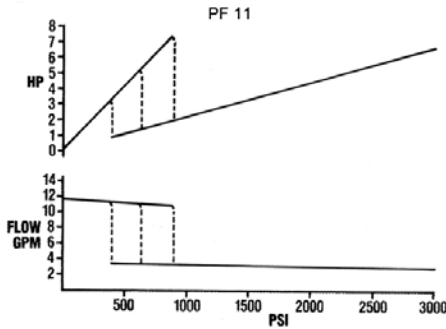
Main characteristics:

- Gear type pump.
- Adjustable unloaded range.
- Typically used for log splitters, press, etc.

P/N	Shaft	Mount Type	Ports		Displacement (in ³ /r)		Flow (GPM)		Pressure(psi) Max
			In	Out	High Pressure	Low. Pressure	Max	Min	
PF11	½ x 1.5	4 Bolt flange	½ NPTF	½ NPTF	0.194	0.517	11	3	3000
PF16	½ x 1.5	4 Bolt flange	1in tube	½ NPTF	0.258	0.776	16	4	3000
PF22	5/8 x 1.5	2 Bolt flange	1 NPTF	¾ NPTF	0.465	0.930	22	7	3000

At 3600 RPM, with 300SSU oil

Performance (at 3600 RPM):



Certified Quality Products